

## Museum Facts: Details



### Museums and the COVID-19 Pandemic

- Survey data has confirmed the financial state of U.S. museums is moving from bad to worse. One-third of museums may shutter permanently without immediate support—the loss of 12,000 museums and 124,000 jobs.<sup>1</sup>
- 30 percent of museums remain closed since the March lockdown and those that have reopened are operating on an average of 35 percent of their regular attendance—a reduction that is unsustainable.<sup>2</sup>
- Over half (53%) of responding museums have furloughed or laid off staff. Overall, respondents indicated that approximately 30% of staff are out of work. Positions most impacted by staffing reductions included frontline (68%), education (40%), security/maintenance (29%), and collections (26%).<sup>3</sup>
- Museums anticipated losing approximately 35% of budgeted operating income in 2020 and are anticipating losing an additional 28% of normal operating income in 2021.<sup>4</sup>



### Museums Are Economic Engines (Pre-Pandemic data)

- Museums support over 726,000 American jobs.<sup>5</sup>
- Museums contribute \$50 billion to the U.S. economy each year.<sup>6</sup>
- Seventy-six percent of all U.S. leisure travelers participate in cultural or heritage activities such as visiting museums. These travelers spend 60 percent more money on average than other leisure travelers.<sup>7</sup>
- The economic activity of museums generates over \$12 billion in tax revenue, one-third of it going to state and local governments. Each job created by the museum sector results in \$16,495 in additional tax revenue.<sup>8</sup>
- Every direct job at a museum supports an additional job in the economy. This is a higher rate than many other industries.<sup>9</sup>
- Museums and other nonprofit cultural organizations return more than \$5 in tax revenue for every \$1 they receive in funding from all levels of government.<sup>10</sup>



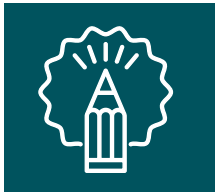
### Museums Are Community Anchors

- In determining America's Best Cities, Bloomberg Business Week placed the greatest weight on "leisure amenities [including density of museums], followed by educational metrics and economic metrics...then crime and air quality."<sup>11</sup>
- Money Magazine's annual 'Best Places to Live' survey incorporates the concentration of accredited museums.<sup>12</sup>



## Museums Serve the Whole Public

- More people visited an art museum, science center, historic house or site, zoo, or aquarium in 2018 than attended a professional sporting event.<sup>13</sup>
- Museum websites serve a diverse online community, including millions of teachers, parents, and students (including those students who are home-schooled).
- Museum volunteers contribute a million hours of service every week.<sup>14</sup>
- Support for museums is robust regardless of political persuasion. 96% of Americans would approve of lawmakers who acted to support museums. The number is consistently high for respondents who consider themselves politically liberal (97%), moderate (95%), or conservative (93%).<sup>15</sup>
- Many museums offer programs tailored to veterans and military families. In 2019 over 2,000 museums in all 50 states participated in the 10th year of the Blue Star Museums program, offering free summer admission to all active-duty and reserve personnel and their families.<sup>16</sup> In the past five years more than 4 million active duty members and their families have participated in the Blue Star Museums program, which is, on average, more than 800,000 visitors per year, and many other museums offer military discounts or free admission throughout the year.
- Museums also provide many social services, including programs for children on the autism spectrum, English as a Second Language classes, and programs for adults with Alzheimer's or other cognitive impairments.<sup>17</sup>
- Museums are committed to ensuring that people of all backgrounds have access to high quality experiences in their institutions. In 2012, 37% of museums were free at all times or had suggested admission fees only; nearly all the rest offered discounts or free admission days.<sup>18</sup>
- Since 2014, more than 600 museums located in all 50 US states, the District of Columbia, and the US Virgin Islands have facilitated almost 3 million museum visits for low-income Americans through the Museums for All program.<sup>19</sup>
- About 26% of museums are located in rural areas<sup>20</sup>; other museums reach these communities with traveling vans, portable exhibits, and robust online resources.



### Museums Partner with Schools

- Museums spend over \$2 billion each year on education activities; the typical museum devotes three-quarters of its education budget to K-12 students.<sup>21</sup>
- Museums receive approximately 55 million visits each year from students in school groups.<sup>22</sup>
- Museums help teach the state and local curricula, tailoring their programs in math, science, art, literacy, language arts, history, civics and government, economics and financial literacy, geography, and social studies.<sup>23</sup>
- Children who visited a museum during kindergarten had higher achievement scores in reading, mathematics, and science in third grade than children who did not. Children who are most at risk for deficits and delays in achievement also see this benefit.<sup>24</sup>



### Museums Are Trusted

- The American public considers museums the most trustworthy source of information in America, rated higher than local papers, nonprofit researchers, the U.S. government, and academic researchers.<sup>25</sup>
- Museums preserve and protect more than a billion objects.<sup>26</sup>
- The American public considers museums a more reliable source of historical information than books, teachers, or even personal accounts by relatives.<sup>27</sup>



### Museums and Public Opinion

- 97% of Americans believe that museums are educational assets for their communities.
- 89% believe that museums contribute important economic benefits to their community.
- 96% would think positively of their elected officials for taking legislative action to support museums.
- 96% want to maintain or increase federal funding for museums.<sup>28</sup>



### Museums Save Species

- In 2019, accredited museums spent \$231.5 million on field conservation projects in 127 countries.<sup>29</sup>
- Museums are involved with conservation breeding, habitat preservation, public education, field conservation, and supportive research to ensure survival for many of the planet's threatened or endangered species. Museums also conduct or facilitate research to advance the scientific knowledge of the animals in human care and to enhance the conservation of wild populations.

## References

1. Second National Snapshot of COVID-19 Impact on U.S. Museums, AAM and Wilkening Consulting
2. Ibid.
3. Ibid.
4. Ibid.
5. Museums as Economic Engines, AAM and Oxford Economics, 2017
6. Ibid.
7. Cultural and Heritage Traveler Report, Mandala Research, 2013
8. Museums as Economic Engines, AAM and Oxford Economics, 2017
9. Ibid.
10. Arts and Economic Prosperity V, 2017, Americans for the Arts
11. [businessweek.com/slideshows/2012-09-26/americas-50-best-cities](http://businessweek.com/slideshows/2012-09-26/americas-50-best-cities)
12. [time.com/money/4939980/choosing-best-places-to-live-2017](http://time.com/money/4939980/choosing-best-places-to-live-2017)
13. Broader population sampling conducted on behalf of AAM by Wilkening Consulting, 2018
14. Museum Financial Information Survey, AAM, 2009
15. Ibid.



16. National Endowment for the Arts
17. Museums on Call, AAM, 2013; [bitly.com/healthcompendium](https://bitly.com/healthcompendium), 2019
18. Annual Condition of Museums and the Economy, AAM, 2013
19. Museums4all.org
20. Museum Universe Data File, IMLS, 2014
21. Museum Financial Information Survey, AAM, 2009
22. Ibid.
23. Building the Future of Education: Museums and the Learning Ecosystem, Center for the Future of Museums, 2013
24. The Effect of Informal Learning Environments on Academic Achievement during Elementary School, presented to the American Educational Research Association, Swan, 2014
25. Museums R+D, Reach Advisors
26. Heritage Health Index, 2004
27. The Presence of the Past, Rosenzweig and Thelen
28. Museums & Public Opinion, AAM and Wilkening Consulting
29. Association of Zoos and Aquariums